

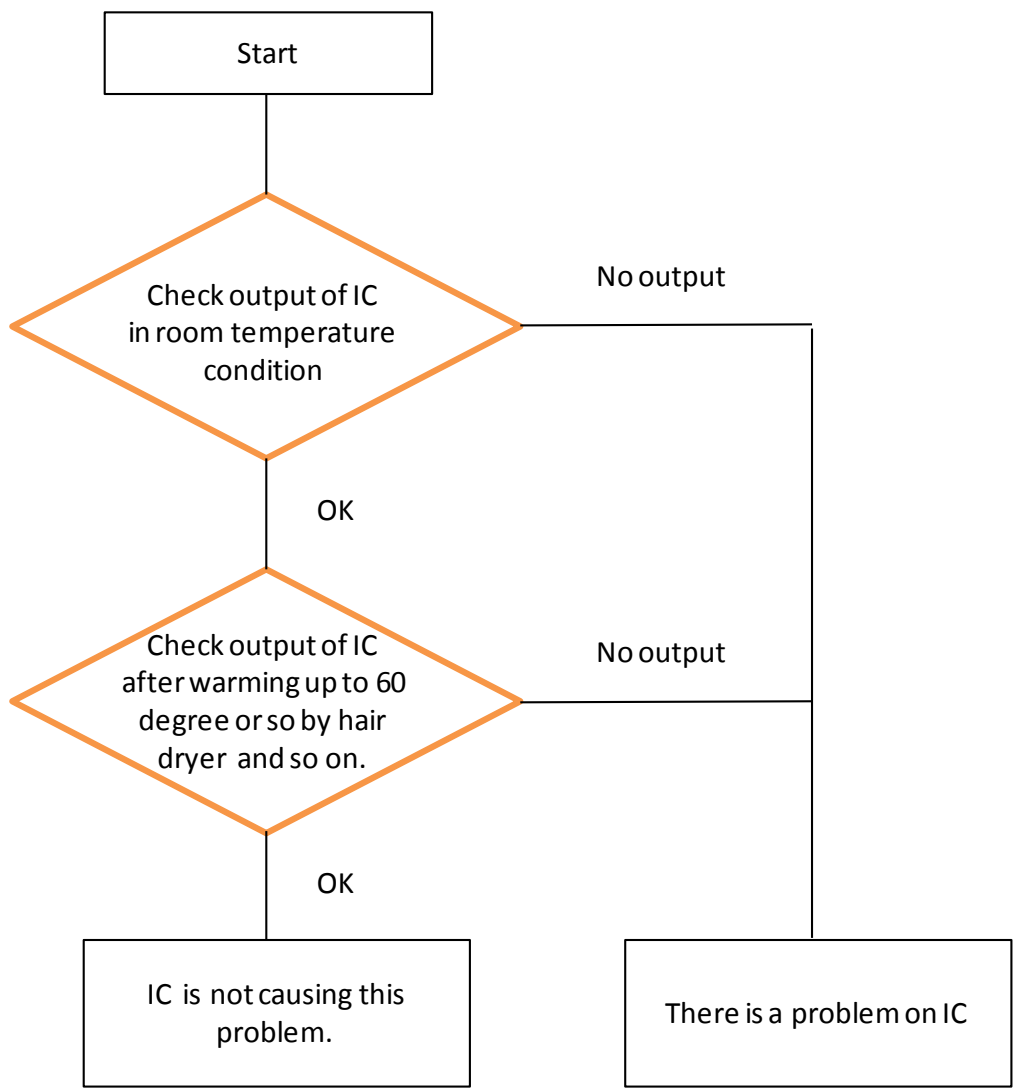


MODEL No.		*	SER. No		S/M No.	PG
Refer to following pages.						
DETAIL						
SYMPTOM		Shutdown, SD 8 times blue LED blinking, but in some cases 9 times				
CAUSE		No output of IC7951, 1.8V regulator IC, on IO_AUDIO ASSY				
SERVICE REMEDY		Replacing defective IC7951, part number NJM2846DL3-18				
FACTORY COUNTER -MEASURE		Service remedy only				
<div><Applicable Part number and models> Part# and descriptionModel category AWW1354 : IO_AUDIO ASSY(EU)---A AWW1353 : IO_AUDIO ASSY(US E)---B AWW1355 : IO_AUDIO ASSY(AU)---C AWW1352 : IO_AUDIO ASSY(US R)---D *Refer to following page of applicable model for model category <Symptom> Shutdown, 8 times blue LED blinking, otherwise, 9 times in some cases. In MAIN NG of Service Factory Mode, MA-IIC DEMOD, MAIN or AUDIO remains in the history. It tends to occur in case IC temperature is higher than room temperature. Is does not occur in cold condition. Once the IC start to work correctly, it will never shutdown even after IC temperature rising. It shutdowns only when starting up. <Service remedy> Replacing defective 1.8V regulator, IC7951. <u>Since IO AUDIO ASSY is less stock, please avoid PCB replacement.</u> In case PCB replacement is done, it is recommended to reuse PCB if possible.</div>						
*	CURRENT PARTS			CO DE	NEW PARTS	
	SYMBOL/DESCRIPTION		PART NUMBER		PART NUMBER	SYMBOL/DESCRIPTION
A-D	IC7951 / Regulator IC		NJM2846DL3-18		No change	
<div>(!):You should use specified parts by safety regulations.</div> <div>PIONEER SERVICE NETWORK CORPORATION NOTE:PARTS CODE 1:Changeable form old to new. Memo: QI670004 2:Not Interchangeable at all. 3:Interchangeable in both ways. Technical Support Division 5:Do not use old parts. KO (E1 W1)</div>						

SQH14010					Page: 2/4
MODEL No.	*	SER. No.	S/M No.	PG	
PDP-LX5090/WYS5	A				
PDP-LX5090/WYS7	A				
PDP-LX5090/WYSIXK5	A				
PDP-LX5090/WYSIXK7	A				
PDP-LX5090H/WYS5	A				
PDP-LX5090H/WYS7	A				
PDP-LX5090H/YSIXK5	A				
PDP-LX5090H/YSIXK7	A				
PDP-LX6090/WYS5	A				
PDP-LX6090/WYSIXK5	A				
PDP-LX6090H/WYS5	A				
PDP-LX6090H/YSIXK5	A				
PRO-111FD/KUCXC	B				
PRO-111FD/KUCXC1	B				
PRO-151FD/KUCXC	B				
PDP-C509A/YP	C				
PDP-LX509A/YP	C				
PDP-LX509A/YP1	C				
PDP-LX609A/YP	C				
PDP-5020FD/KUCXC	D				
PDP-5020FD/KUCXC1	D				
PDP-6020FD/KUCXC	D				

Check flow for defective regulator IC on IO Audio Assy
IC7951, part # NJM2846DL3-18,

In house repair



On site repair

If following 3 conditions are confirmed on site, you can consider the problem is on IC.

- (1) 8 or 9 times blinking with blue LED (SD 8 or 9)
- (2) No output of problematic IC by using multimeter
- (3) 3.4V input of IC is Ok.